
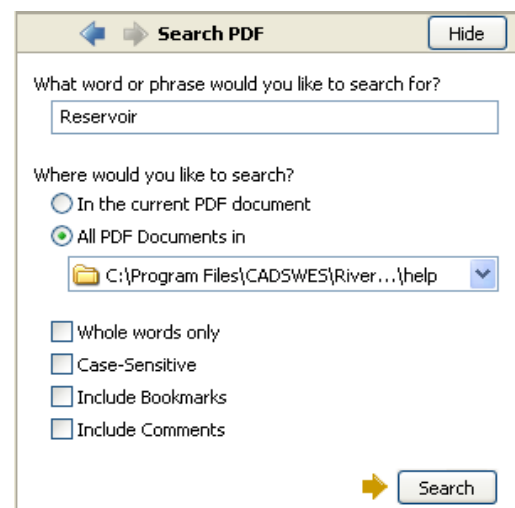
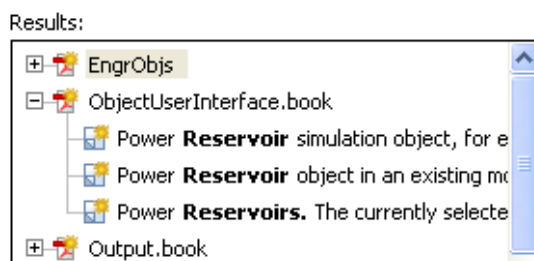
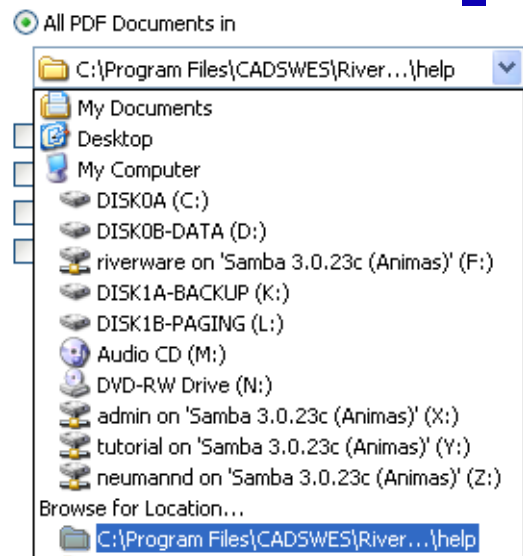


Searching the RiverWare Help

The RiverWare help consists of a series of Adobe Portable Document Format (PDF) files that reside in the “help” directory. Searching can be accomplished through functionality provided by Acrobat Reader. By default, the search functionality will look in the currently opened PDF document. To search across multiple documents (i.e. across all of RiverWare’s help), you need to specify that you wish to search in all pdf files in a specific directory. A search is done as follows:

- Open the search tool by clicking the binocular icon , by typing Shift-Ctrl-F, or by selecting Edit->Search.
- Type in the search term in the box
- Click on the button to search in: **All PDF Documents in**
- Click on the pull-down menu as shown in the screenshot. Click **Browse for Location...** and navigate to the Riverware home directory and select the “help” directory. On windows, this is typically in the “C:\Program Files\CADSWES\Riverware #.#\help”. On Solaris, the “help” directory is typically in the same location where the riverware executable resides. After selecting this directory once, Acrobat will save the location and when you click the pull down menu, the correct directory should be near the bottom.
- A second screenshot is shown ready to search. Click the **Search** button.
- A list of all matches, organized by file, will appear in the Results area. Click on a result to go to that location.



Using this search technique, the RiverWare help can be searched without even opening the help files, i.e. a search can be made from any open Acrobat Reader window. Just select the correct directory and it will search all the pdf files in that directory.